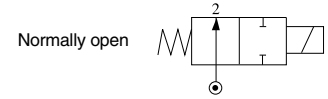


# NO

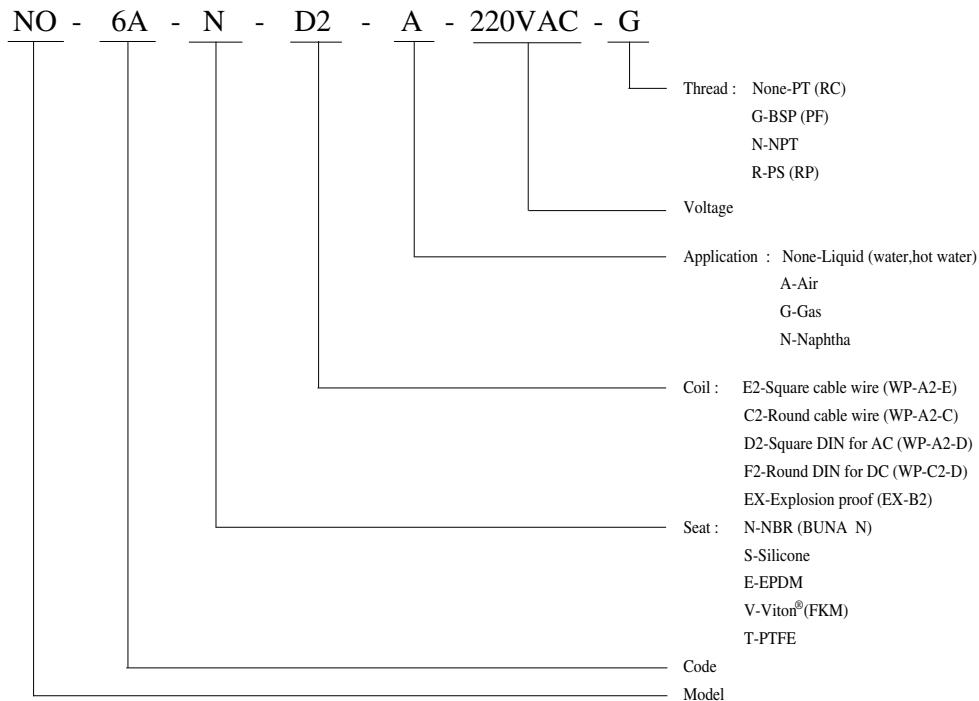
## 2/2-way normally open solenoid valve of forged brass body for general application



### Direct-operated Type

| Model    | Port size | Orifice (mm) | CV value | Fluid temp. (°C) | Seat disc | Differential pressure kg/cm <sup>2</sup> (bar) |      |      |                 | Wt. (kg) |
|----------|-----------|--------------|----------|------------------|-----------|--|------|------|-----------------|----------|
|          |           |              |          |                  |           | Liquid   | Air  | Gas  | Naphtha (120°C) |          |
| NO - 6A  | 1/8 "     | 3            | 0.26     | -10              | NBR       | 0-10   | 0-10 | 0-10 | 0-7             | 0.52     |
| NO - 6B  | 1/8 "     | 4            | 0.58     |                  |           | 0-6  | 0-6  | 0-6  | 0-5             | 0.52     |
| NO - 6C  | 1/8 "     | 5            | 0.64     |                  |           | 0-4  | 0-4  | 0-4  | 0-3             | 0.52     |
| NO - 8A  | 1/4 "     | 3            | 0.26     | ∫                | Silicone  | 0-10   | 0-10 | 0-10 | 0-7             | 0.50     |
| NO - 8B  | 1/4 "     | 4            | 0.58     |                  |           | 0-6  | 0-6  | 0-6  | 0-5             | 0.50     |
| NO - 8C  | 1/4 "     | 5            | 0.64     |                  |           | 0-4  | 0-4  | 0-4  | 0-3             | 0.50     |
| NO - 10A | 3/8 "     | 4            | 0.58     | 80 (120)         | EPDM      | 0-6  | 0-6  | 0-6  | 0-5             | 0.80     |
| NO - 10B | 3/8 "     | 6            | 0.79     |                  |           | 0-2  | 0-2  | 0-2  | 0-1             | 0.80     |
| NO - 12A | 1/2 "     | 6            | 0.79     |                  |           | 0-2  | 0-2  | 0-2  | 0-1             | 0.95     |

### How to order



### Notes:

- In order to prolong operating life, it is better to allocate pipe horizontally and face coil upward.
- Voltage drop range is within ±10%.
- Pressure of voltage DC is 70% of voltage AC only.
- Max. temperature is up to 120°C.
- Selection of coil refer to page 136~139.
- PTFE seat and explosion proof type are custom-made.

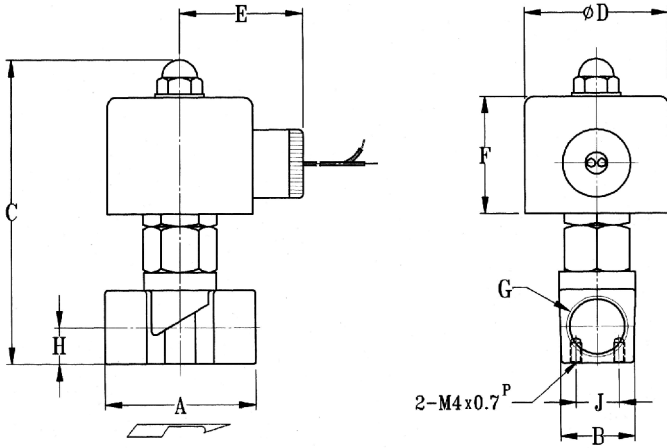
### Inapplicable Fluids:

- Fluids that have kinematic viscosity over 50 CST.
- Fluids that will turn to liquid after being heated and become solid after being cooled.
- Corrosive fluids.

# NO

## 2/2-way normally open solenoid valve of forged brass body for general application

### ● NO-6A~12A Specification Chart



### ● Specifications

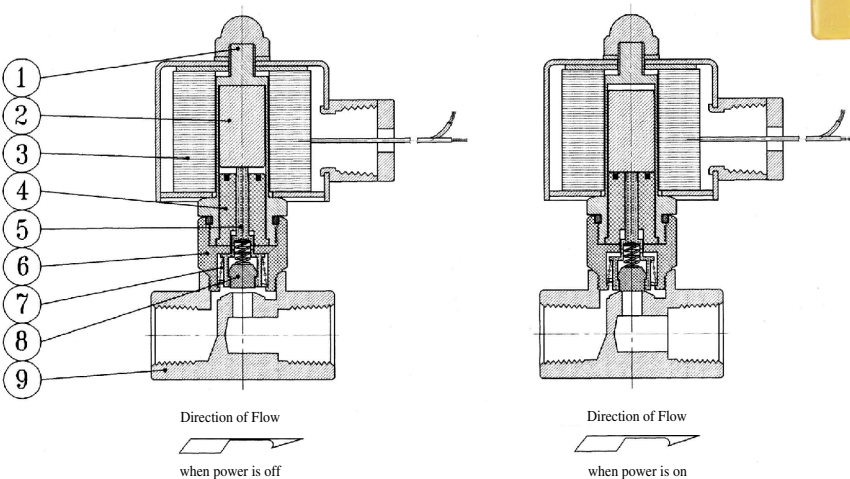
Unit:mm

| Item<br>Model | A  | B  | C   | D  | E  | F  | G    | H    | J  | Coil Model |
|---------------|----|----|-----|----|----|----|------|------|----|------------|
| NO-6A~8B      | 41 | 19 | 108 | 53 | 45 | 43 | 1/4" | 10.5 | 15 | WP-A2-C    |
|               |    |    |     | 40 | 40 | 38 |      |      |    | WP-A2-E    |
|               |    |    |     | 40 | 65 | 38 |      |      |    | WP-A2-D*   |
|               |    |    |     | 56 | 71 | 38 |      |      |    | WP-C2-D*   |
| NO-10A~10B    | 50 | 25 | 110 | 53 | 45 | 43 | 3/8" | 11.7 | 15 | WP-A2-C    |
|               |    |    |     | 40 | 40 | 38 |      |      |    | WP-A2-E    |
|               |    |    |     | 40 | 65 | 38 |      |      |    | WP-A2-D*   |
|               |    |    |     | 56 | 71 | 38 |      |      |    | WP-C2-D*   |
| NO-12A        | 55 | 27 | 112 | 53 | 45 | 43 | 1/2" | 13   | -- | WP-A2-C    |
|               |    |    |     | 40 | 40 | 38 |      |      |    | WP-A2-E    |
|               |    |    |     | 40 | 65 | 38 |      |      |    | WP-A2-D*   |
|               |    |    |     | 56 | 71 | 38 |      |      |    | WP-C2-D*   |

\* with connector



### ● NO-6A~12A Operation Chart

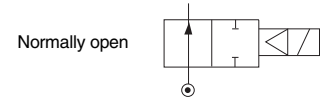


### ● Material Table

| Item | Article           | Material                   |
|------|-------------------|----------------------------|
| 1    | Solenoid Tube     | Stainless Steel            |
| 2    | Slide Core        | Stainless Steel            |
| 3    | Coil              | Brass Wire                 |
| 4    | Armature Core     | Stainless Steel            |
| 5    | Operating Spindle | Brass                      |
| 6    | Joint Sleeve      | Stainless Steel            |
| 7    | Spring            | Stainless Steel            |
| 8    | Seat              | NBR, Silicone, EPDM, Viton |
| 9    | Valve Body        | Forged Brass               |

# NO

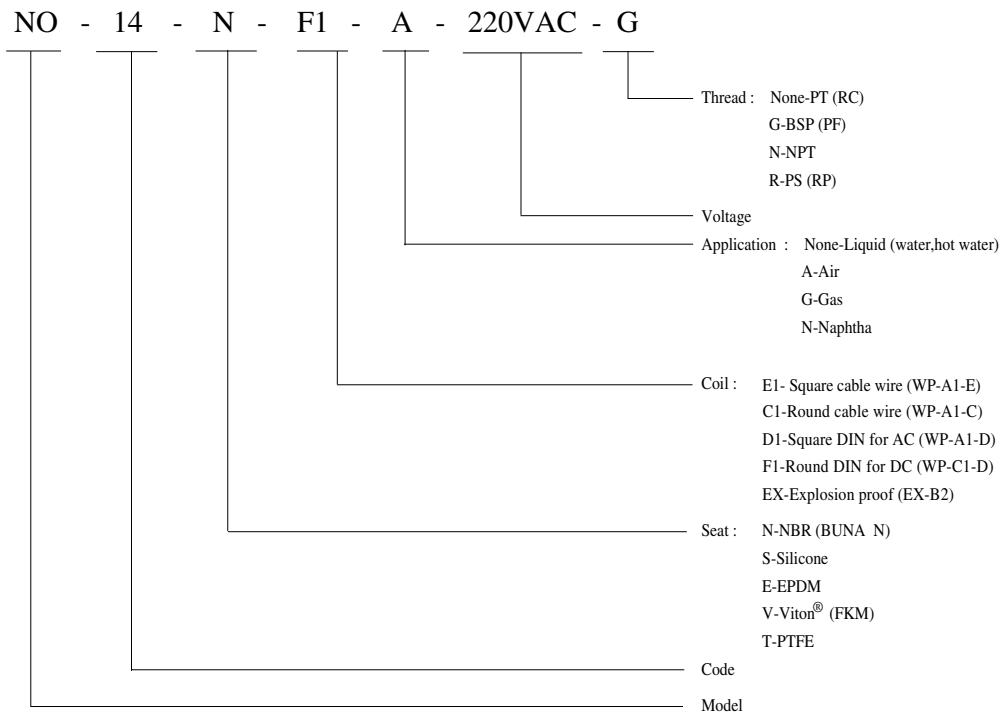
## 2/2-way normally open solenoid valve of forged brass body for general application



### Pilot Type

| Model     | Port size      | Orifice (mm) | CV value | Fluid temp. (°C) | Seat disc | Differential pressure kg/cm <sup>2</sup> (bar) |        |                 | Wt. (kg) |     |
|-----------|----------------|--------------|----------|------------------|-----------|--|--------|-----------------|----------|-----|
|           |                |              |          |                  |           | Liquid   | Air    | Naphtha (120°C) |          |     |
| NO - 14   | 3/8 "          | 15           | 4.5      | -10              | NBR       | 0.5-10   | 0.5-10 | 0.5-10          | 1.4      |     |
| NO - 15   | 1/2 "          | 15           | 4.5      |                  |           | 0.5-10   | 0.5-10 | 0.5-10          | 1.4      |     |
| NO - 20   | 3/4 "          | 20           | 9.3      |                  |           | 0.5-10   | 0.5-10 | 0.5-10          | 1.8      |     |
| NO - 25   | 1 "            | 25           | 13.2     |                  | }         | Silicone                                       | 0.5-10 | 0.5-10          | 0.5-10   | 1.9 |
| NO - 35   | 1 1/4 "        | 35           | 26       |                  |           | 0.5-10   | 0.5-10 | 0.5-10          | 3.1      |     |
| NO - 40   | 1 1/2 "        | 35           | 26       |                  |           | EPDM   | 0.5-10 | 0.5-10          | 0.5-10   | 3.0 |
| NO - 50   | 2 "            | 50           | 48       |                  | 80 (120)  | Viton®   | 0.5-7  | 0.5-7           | 0.5-7    | 5.1 |
| NO - 25AF | 1 " Flange     | 25           | 13.2     | 0.5-10           |           |  | 0.5-10 | 0.5-10          | 4.8      |     |
| NO - 35AF | 1 1/4 " Flange | 35           | 26       | PTFE             |           | 0.5-10   | 0.5-10 | 0.5-10          | 7.0      |     |
| NO - 40AF | 1 1/2 " Flange | 35           | 26       |                  |           | 0.5-10   | 0.5-10 | 0.5-10          | 7.2      |     |
| NO - 50AF | 2 " Flange     | 50           | 48       |                  |           | 0.5-7  | 0.5-7  | 0.5-7           | 10.5     |     |

### How to order



### Notes:

- In order to prolong operating life, it is better to allocate pipe horizontally and face coil upward.
- Voltage drop range is within ±10%.
- Pressure of voltage DC is 70% of voltage AC only.
- Min pressure of 0.5 kg/cm<sup>2</sup> is required to activate.
- Combined diaphragm design assures no breaking.
- Max. temperature is up to 120°C.
- Selection of coil reference to page 136~139.
- PTFE diaphragm and explosion proof type are custom-made.

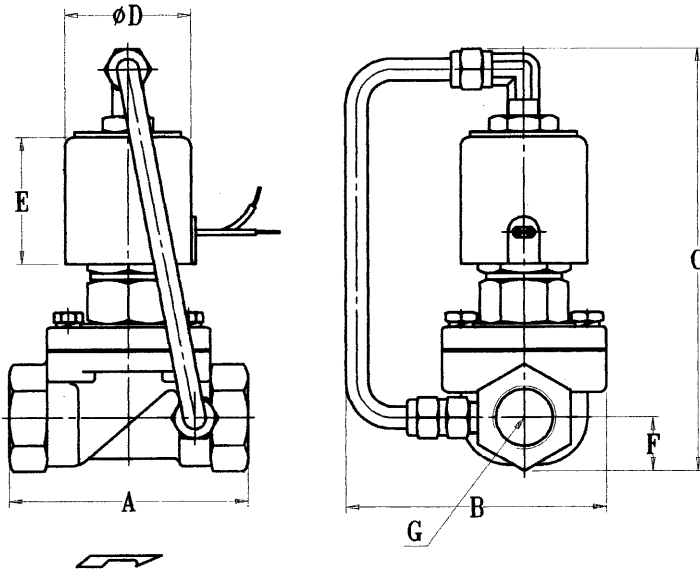
### Inapplicable Fluids:

- Fluids that have kinematic viscosity over 50 CST.
- Fluids that will turn to liquid after being heated and become solid after being cooled.
- Corrosive fluids.

# NO

## 2/2-way normally open solenoid valve of forged brass body for general application

### ● NO-14~50 Thread Contour Specification Chart



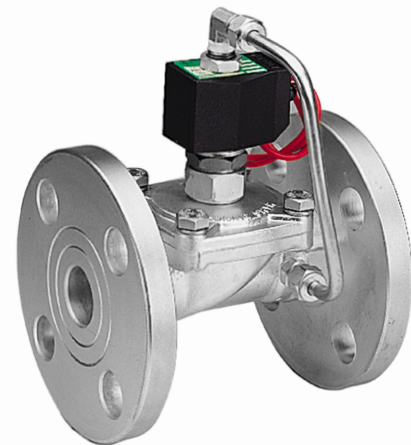
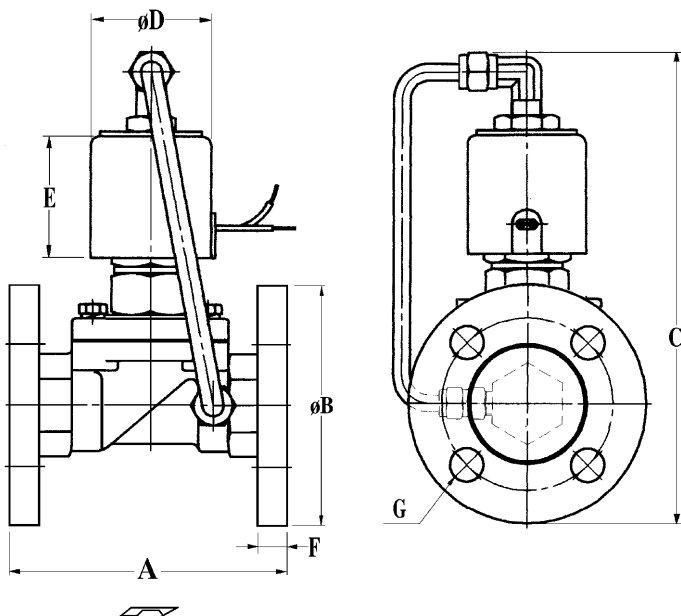
### ● Specifications

Unit:mm

| Item<br>Model | A   | B   | C     | D            | E            | F           | G          |
|---------------|-----|-----|-------|--------------|--------------|-------------|------------|
| NO-14         | 75  | 75  | 128.5 | WP-A1-C:41.5 | WP-A1-C:40   | 14.5        | 3/8"       |
| NO-15         | 75  | 75  | 128.5 |              |              | 14.5        | 1/2"       |
| NO-20         | 85  | 85  | 139.5 | WP-A1-D:53*  | WP-A1-D:32.5 | 18          | 3/4"       |
| NO-25         | 100 | 100 | 145.5 |              |              | 23          | 1"         |
| NO-35         | 120 | 120 | 165.5 | WP-A1-E:58   | WP-A1-E:32.5 | 33          | 1 1/4"     |
| NO-40         | 120 | 120 | 165.5 |              |              | WP-C1-D:56* | WP-C1-D:35 |
| NO-50         | 150 | 150 | 185.5 | 40.5         | 2"           |             |            |

\* with connector

### ● NO-25AF~50AF Flange Contour Specification Chart



### ● Specifications

Unit:mm

| Item<br>Model | A   | B   | C   | D            | E            | F  | G<br>Ø | G<br>Hole No. |
|---------------|-----|-----|-----|--------------|--------------|----|--------|---------------|
| NO-25AF       | 130 | 125 | 162 | WP-A1-C:41.5 | WP-A1-C:40   | 14 | 19     | 4             |
| NO-35AF       | 160 | 125 | 177 | WP-A1-D:53*  | WP-A1-D:32.5 | 16 | 19     | 4             |
| NO-40AF       | 160 | 140 | 177 | WP-A1-E:58   | WP-A1-E:32.5 | 16 | 19     | 4             |
| NO-50AF       | 200 | 155 | 195 | WP-C1-D:56*  | WP-C1-D:35   | 16 | 19     | 4             |

JIS Flange specification:10 kg/cm<sup>2</sup>

\* with connector