

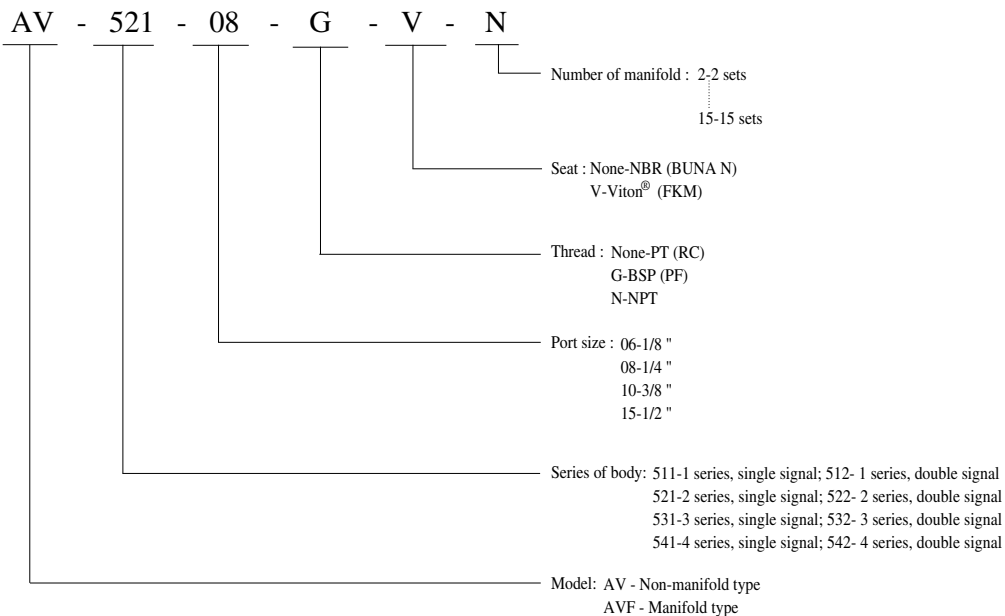


5/2-way air master valve of aluminum alloy body for pipe connection

Single Signal / Double Signal Spool Design

Model	Port size	Effective Area (mm ²)	CV value	Fluid temp. (°C)	Seat disc	Differential pressure kg/cm ² (bar)	Wt. (kg)
						Air	
AV-511-06	1/8 "	12	0.67	-10	NBR	1.5 - 9.9	0.12
AV-521-08	1/4 "	16	0.89			1.5 - 9.9	0.19
AV-531-08	1/4 "	36	2			1.5 - 9.9	0.28
AV-531-10	3/8 "	36	2			1.5 - 9.9	0.28
AV-541-15	1/2 "	50	2.8			1.5 - 9.9	0.53
AV-512-06	1/8 "	12	0.67			1.5 - 9.9	0.15
AV-522-08	1/4 "	16	0.89			1.5 - 9.9	0.23
AV-532-08	1/4 "	36	2			1.5 - 9.9	0.31
AV-532-10	3/8 "	36	2	60	Viton®	1.5 - 9.9	0.31
AV-542-15	1/2 "	50	2.8			1.5 - 9.9	0.66

How to order



Notes:

1. Fluid: Air.
2. Installation position: free.
3. Exhaust of 521 series exhaust is 1/8" and 532 series is 1/4".
4. Viton® seat is custom-made.

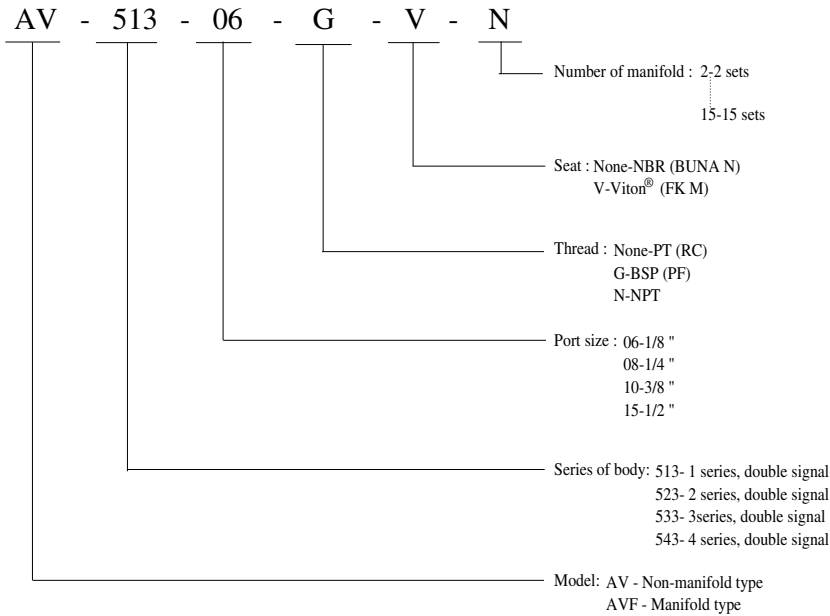


5/3-way air master valve of aluminum alloy for pipe connection

Double Signal / Centrally Closed & Exhaust / Spool Design

Model	Port size	Effective Area (mm ²)	CV value	Fluid temp. (°C)	Seat disc	Differential pressure kg/cm ² (bar)	Wt. (kg)
						Air	
AV-513-06	1/8 "	9	0.67	-10	NBR	1.5 - 9.9	0.15
AV-523-08	1/4 "	12	0.89			1.5 - 9.9	0.28
AV-533-08	1/4 "	32	2			1.5 - 9.9	0.41
AV-533-10	3/8 "	32	2			1.5 - 9.9	0.41
AV-543-15	1/2 "	35	2.8			1.5 - 9.9	0.71
AV-513-06	1/8 "	9	0.67			60	Viton®
AV-523-08	1/4 "	12	0.89	1.5 - 9.9	0.28		
AV-533-08	1/4 "	32	2	1.5 - 9.9	0.41		
AV-533-10	3/8 "	32	2	1.5 - 9.9	0.41		
AV-543-15	1/2 "	35	2.8	1.5 - 9.9	0.71		

How to order

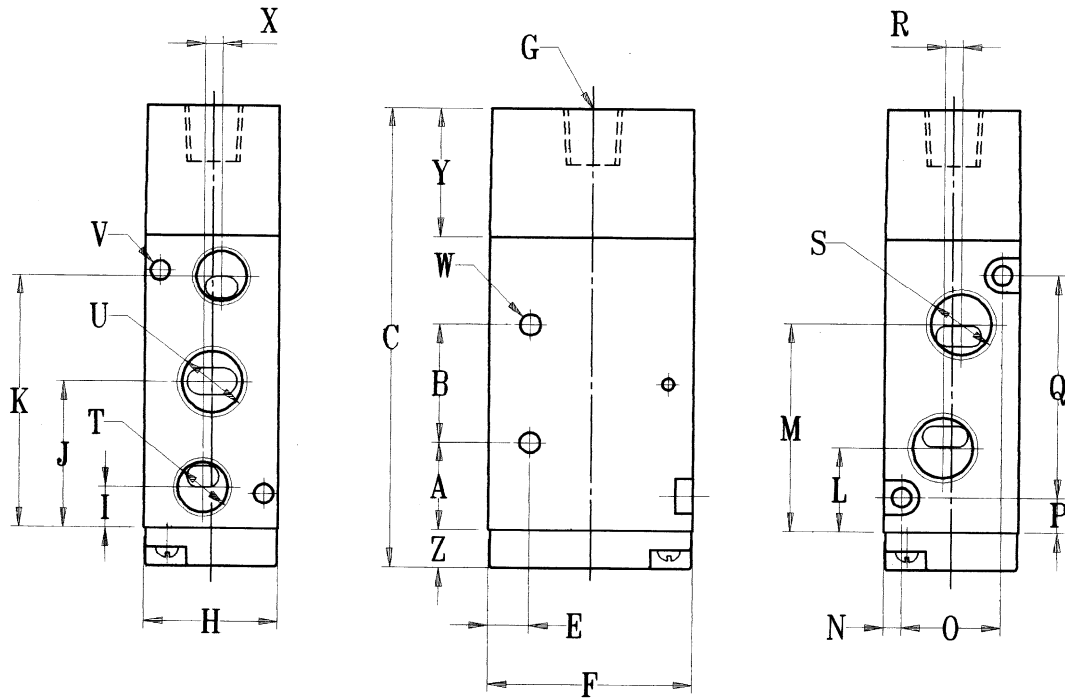
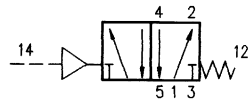
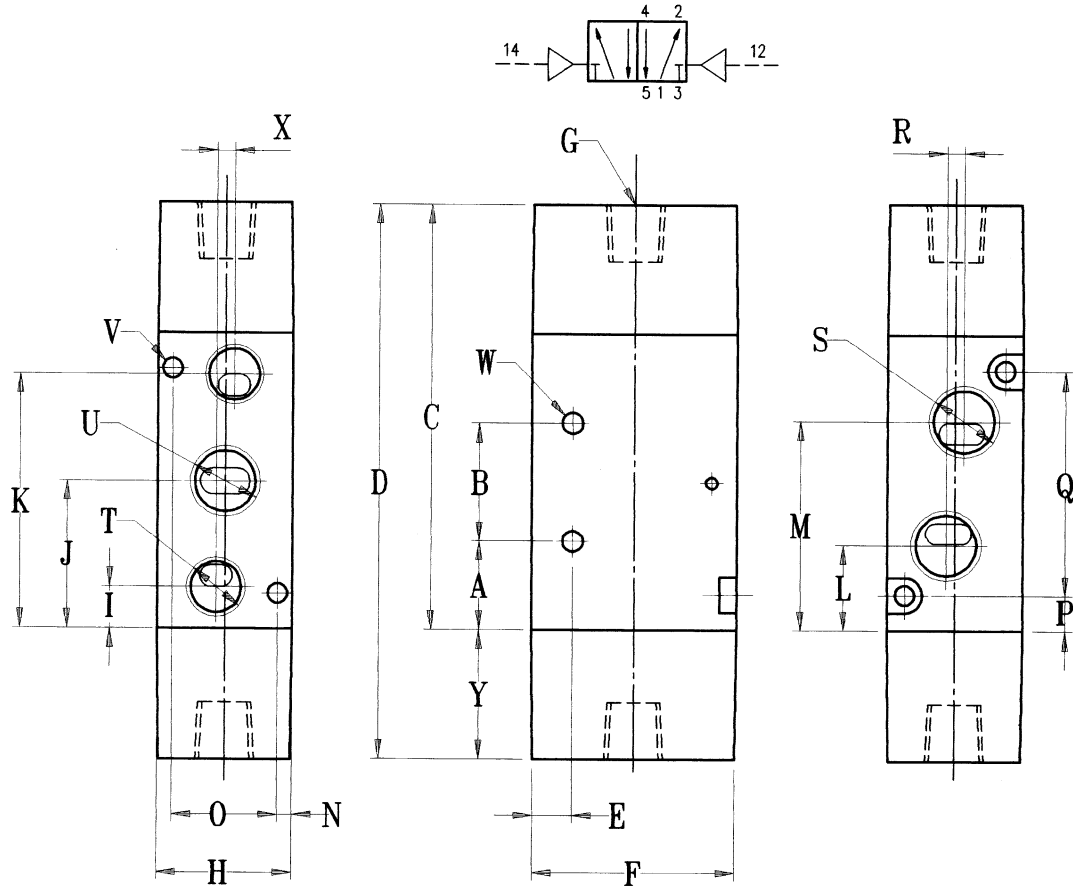


Notes:

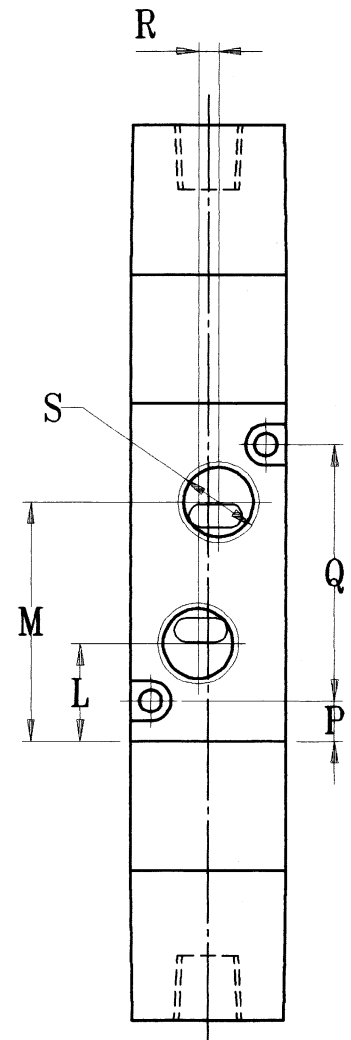
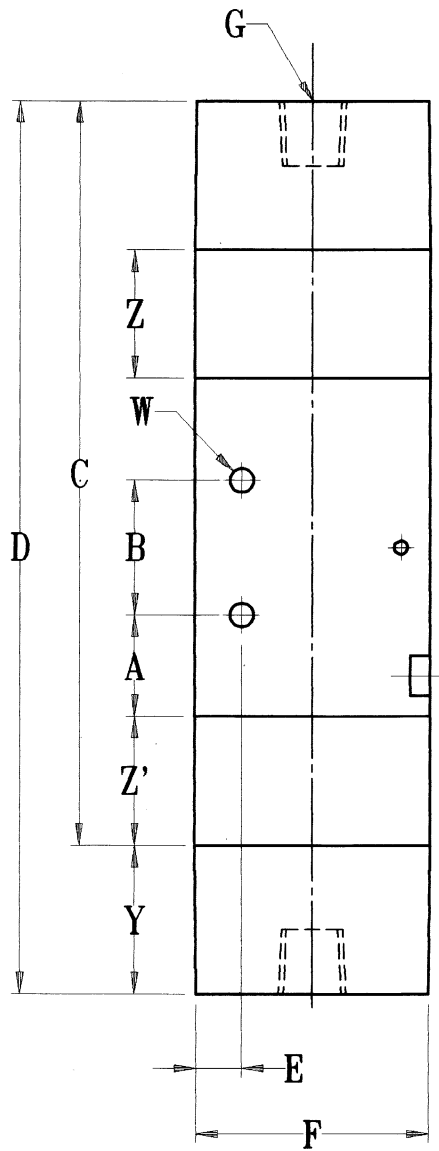
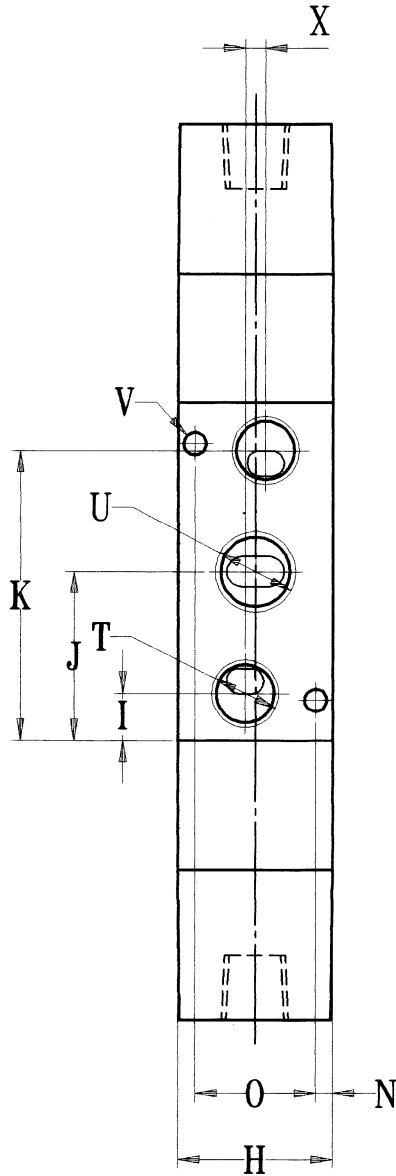
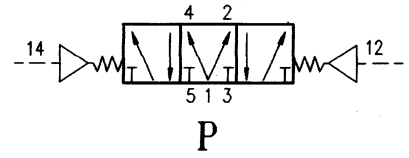
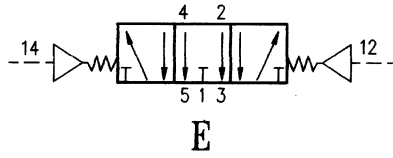
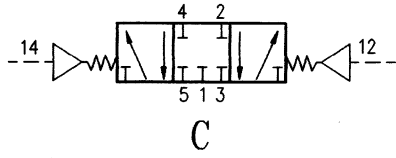
1. Fluid: Air.
2. Installation position: free.
3. Exhaust of 521 series is 1/8" and 532 series is 1/4".
4. Viton® seat is custom-made.

● Specifications Chart

Unit:mm



● Specifications Chart



● Specifications of 5/2-way Single Signal

Unit:mm

Item Model	A	B	C	G	E	F	H	I	J	K	L	M	N	O	
AV-511-06	14.5	14	69	PT 1/8"	4	28	18	7.5	21.5	35.5	14	29	2.5	13	
AV-521-08	15	20	75.5	PT 1/8"	7	35	23	7	25	43	14.5	35.5	3	17	
AV-531-10	20.5	24	92	PT 1/8"	6	40	27	10	32.5	55	20.5	44.5	3.5	20	
AV-541-15	33	28	127	PT 1/8"	8	50	34	15.5	47	78.5	29	66	3.5	27	

Item Model	P	Q	R	S	T	U	V	W	X	Y	Z		
AV-511-06	6.5	30	3	PT 1/8"	PT 1/8"	PT 1/8"	3.3	3.3	2	15	11		
AV-521-08	63	38	3	PT 1/4"	PT 1/8"	PT 1/4"	3.3	4.3	0	19	6.5		
AV-531-10	7.5	50	4	PT 1/4"	PT 1/4"	PT 3/8"	4.5	4.5	0	19	8		
AV-541-15	11	72	4	PT 1/2"	PT 1/2"	PT 1/2"	4.5	5.5	0	25	8		

● Specifications of 5/2-way Double Signal

Unit:mm

Item Model	A	B	C	D	G	E	F	H	I	J	K	L	M	N	O
AV-512-06	14.5	14	58	73	PT 1/8"	4	28	18	7.5	21.5	35.5	14	29	2.5	13
AV-522-08	15	20	69	88	PT 1/8"	7	35	23	7	25	43	14.5	35.5	3	17
AV-532-10	20.5	24	84	103	PT 1/8"	6	40	27	10	32.5	55	20.5	44.5	3.5	20
AV-542-15	33	28	119	144	PT 1/8"	8	50	34	15.5	47	78.5	29	66	3.5	27

Item Model	P	Q	R	S	T	U	V	W	X	Y			
AV-512-06	6.5	30	3	PT 1/8"	PT 1/8"	PT 1/8"	3.3	3.3	2	15			
AV-522-06	6	38	3	PT 1/4"	PT 1/8"	PT 1/4"	3.3	4.3	0	19			
AV-532-10	7.5	50	4	PT 3/8"	PT 1/4"	PT 3/8"	4.5	4.5	0	19			
AV-542-15	11	72	4	PT 1/2"	PT 1/2"	PT 1/2"	4.5	5.5	0	25			

● Specifications of 5/3-way Double Signal

Unit:mm

Item Model	A	B	C	D	G	E	F	H	I	J	K	L	M	N	O
AV-513-06	14.5	14	73	88	PT 1/8"	4	28	18	7.5	21.5	35.5	14	29	2.5	13
AV-523-08	15	20	107	126	PT 1/8"	7	35	23	7	25	43	14.5	35.5	3	17
AV-533-10	20.5	24	114	133	PT 1/8"	6	40	27	10	32.5	55	20.5	44.5	3.5	20
AV-543-15	33	28	119	144	PT 1/8"	8	50	34	15.5	47	78.5	29	66	3.5	27

Item Model	P	Q	R	S	T	U	V	W	X	Y	Z	Z'	
AV-513-06	6.5	30	3	PT 1/8"	PT 1/8"	PT 1/8"	3.3	3.3	2	15	19		
AV-523-08	6	38	3	PT 1/4"	PT 1/8"	PT 1/4"	3.3	4.3	0	19	19	19	
AV-533-10	7.5	50	4	PT 3/8"	PT 1/4"	PT 3/8"	4.5	4.5	0	19	15	15	
AV-543-15	11	72	4	PT 1/2"	PT 1/2"	PT 1/2"	4.5	5.5	0	25			